

A large yellow industrial robotic arm with blue corrugated hoses, positioned diagonally across the frame. The background is a blurred industrial setting.

**BizLink**

# Robotics

Engineering, Products,  
Services in USA

Factory Automation





# Factory Automation

## Our market segment in all its diversity

With innovative solutions for intelligent energy and data management in automated production processes, BizLink has been for years a preferred supplier of many automotive and factory automation OEMs.

BizLink products are already facing up to the key future trend of digitalization with an extensive and innovative range of complementary products and services in the market segments Automation, Drives and Robotics.



In several competence centers around the world BizLink develops and produces bus cables, Industrial Ethernet and Motion Control cables as well as cable systems and services. Connector development and production as well as assembled drag chains round off the product portfolio. Moreover, BizLink supplies a wide variety of solutions, including robotic cables and their assembly, hoses and tubes, dresspack systems, integration-ready robots, robot programming and automation systems training. In view of the increasing digitalization BizLink provides integrated and intelligent sensor-based measuring solutions. BizLink markets this product variety via a global sales organization at nearly 50 locations.

Their sharp focus on service and increasing product diversification provides incentive for developing these markets further. With its product range BizLink confronts the market's challenges by way of ongoing collaboration with technology leaders and user organizations, and it actively develops products as well as services to meet the trends of the future, especially with respect to the increasing digitalization.

**Thus, BizLink is taking an important step towards meeting future market requirements in a 'smart' way.**

Find out more >

[factory-automation.bizlinktech.com](https://factory-automation.bizlinktech.com)

## BizLink Robotic Solutions USA, Inc.

**BizLink Robotic Solutions USA, Inc., (BizLink), is the Americas' leading provider of automated industrial solutions. Our unique position as a leader in automation specialized in robotic cable management solutions, automation systems training, and more means BizLink is uniquely positioned to help our customers reach operating efficiency and production of quality products needed for achieving world-class manufacturing.**

Whether it's defining an original specification; designing, installing, and servicing the automated solution; or empowering operators and technicians to achieve new levels of quality and productivity, BizLink is your solution provider.

## About BizLink

**BizLink, founded in 1996, is headquartered in Fremont, California in the heart of Silicon Valley, USA. Our mission is to make interconnection easier and to become the leading global interconnect solution supplier.**

We support industries that are environmentally conscious and improve quality of life through providing essential components, wire harnesses, and cables to a wide variety of industries such as IT Infrastructure, Client Peripherals, Optical Fiber Communications, Telecom and Networking, Electrical Appliances, Healthcare, Factory Automation, Machinery and Sensors, Motor Vehicle, Rolling Stock, Marine, Industrial, and Solar.



In addition, with flexible production resources and global R&D teams in America, Europe, and Asia, BizLink always provides reliable interconnect solutions in close proximity to markets. BizLink also specializes in providing one-stop EMS and NPI services based on customer's requests.

At BizLink, we strive to keep collaborating closely with customers to turn their innovative ideas into reality.



# Cable Management Systems

A reliable power supply is essential to every industrial process



This is because all production will generally grind to a halt if particular signals cannot be transmitted or required media cannot be supplied. Our many years of experience in the industry enable us to deal with even the most difficult circumstances. We assemble, supply and install standard and custom dresspacks – whether on robots or on special machines. We can configure our solutions to meet your needs, securing a long service life and thus a smooth and resource-conserving production process.

## LSH 3

**BizLink has completely redesigned the LSH guided robot dresspack solution to be more reliable, compact and flexible,** thus making the LSH 3 the most innovative dresspack solution in the global market today. Its intelligent and extremely compact design minimize one of the most common causes of error for robot power supply – collision with interfering contours. This benefit in combination with extremely durable materials and proven components creates maximum clearance with a close-fitting dresspack on the robot arm.

### The LSH 3's benefits include:

- Compact design: fewer interfering contours and lower risk of collision
- Significantly reduced volume, overall weight and length
- Maximum flexibility for dresspack routing
- Compatibility with all LSH versions, without the need for any additional programming
- Compatible to corrugated and smooth yellow tube umbilicals
- Significantly faster replacement of dresspacks in comparison with earlier models
- No maintenance on the retraction element required
- All components are subjected to extensive field testing

LSH 3 is available for new robots, regardless of size, manufacturer, type or application, as well as retrofits and upgrades for existing workcells. It can be mounted vertically, horizontally or upside down and each system can accommodate up to two dresspacks with the widest range of nominal diameters. Optionally, a rotating pivot bearing can be mounted on the front end, which supports even the most extreme movement sequences while reducing stress on the dresspack. The standard extension length of the LSH 3 is 350 mm. Mounting can take place on a customer-specific basis on axis 3, with or without adapter plate.

## LSC

**The LSC can be used in dirty surroundings like e.g. in sand-blasting or milling applications.**

The system is easy to clean without opening it. The LSC is applicable for different nominal widths (48, 70 & 95). All other widths can be adapted, accordingly. It is predestined to be used for applications with maximum bending radius or straight feeding applications e.g. for rivets or studs. Generally, several systems can be installed compactly and in parallel on the robot e.g. leading several dresspacks to the robot tool.

### Please check with our sales team for other cable management solutions and retract systems like

- SLS-line
- Cantilever solutions
- Base basket solutions

### Aside from our standardized solutions we offer customized special solutions.

The spring foot solution can be applied if no or only a small retract length is required and if the robot trajectory is simple. The open spring return system can be modified on site – fast and simple.



## Integration-Ready Robots

### Function packages: Integration-Ready Robots

With BizLink's leading global position as a supplier of robot solutions and services, it is no surprise that some of the world's largest OEMs trust BizLink to prepare their robots for the plant floor.

Our Function Package service begins with your basic robot. We install the dresspack, end-of-arm tooling, weld controller, dense pack, electrical junction box, and other ancillary systems required by your specific application. We optimize the dresspack to maximize your uptime, configure the controller, set up, and test the end of arm tooling (EOAT) software, and calibrate the system for operation or install optional

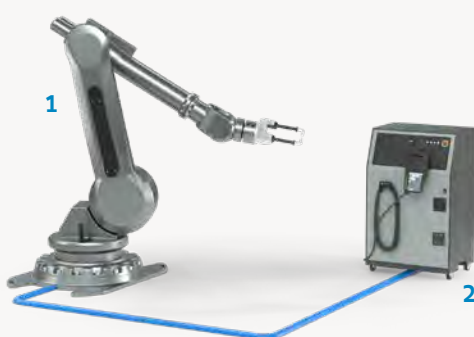
Tool Center Point (TCP) automated calibration solutions as requested. When we're done, your Integration-Ready Robot is ready to go to work at maximum efficiency.

We have the capability to provide you with complete Function Packages – e.g., for spot and laser welding, inert gas welding, vision-guided robotics, measuring, and handling, among many other robot applications. And with our interdisciplinary team of automation engineers and expert technicians, we'll make sure your Integration-Ready Robot is ready to work with existing equipment on your line.

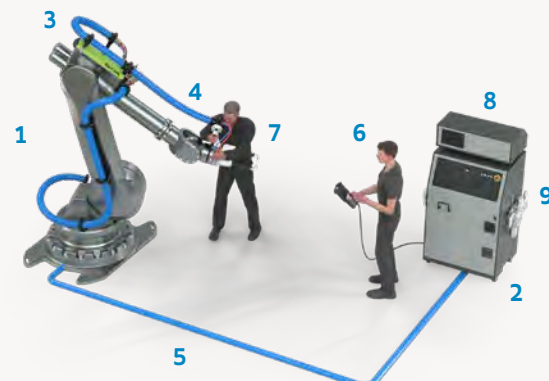
### Without BizLink

### With BizLink

#### Integration-Ready-Robots = BizLink Function Packages



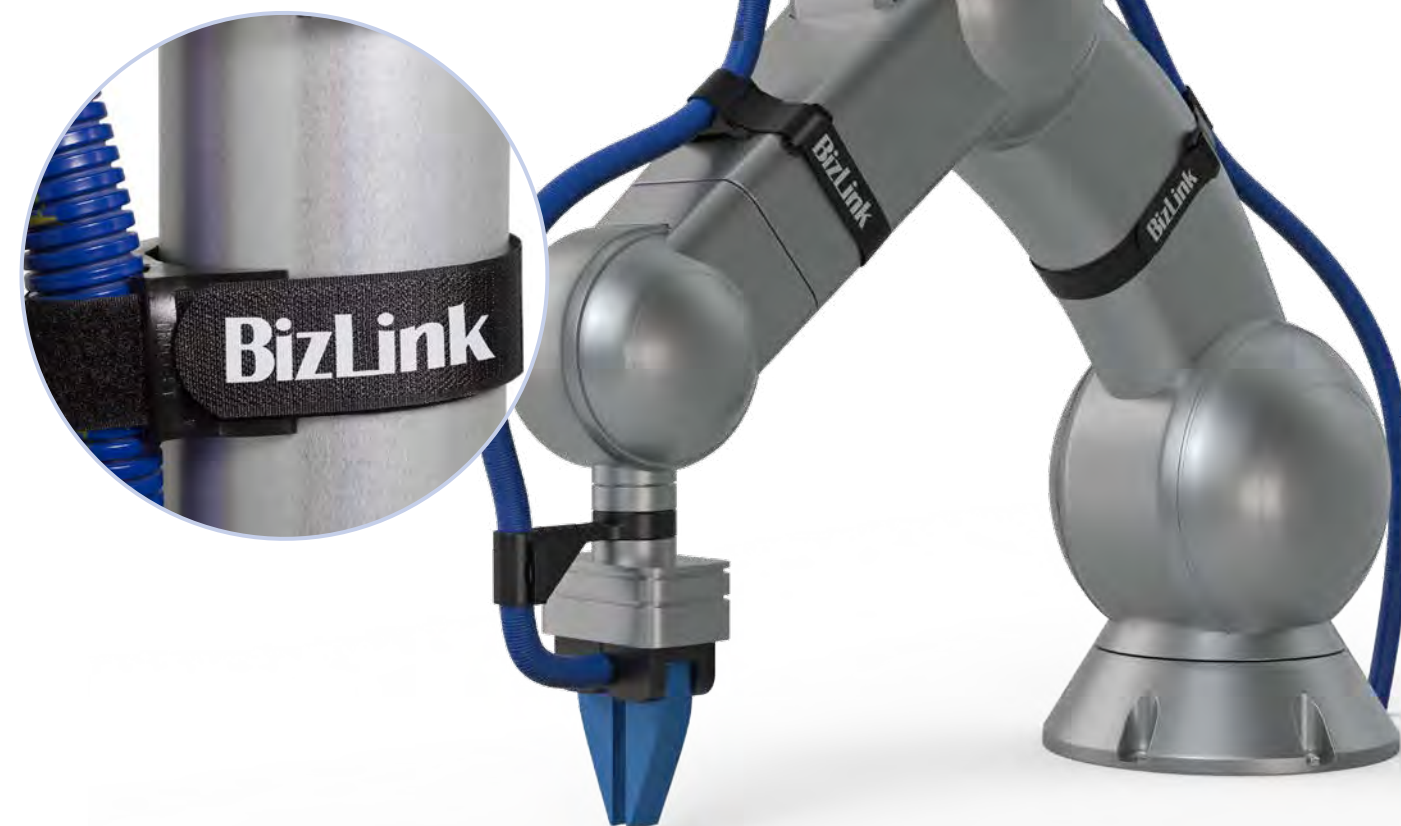
- 1 Robot
- 2 Robot controller



- 1 Robot
- 2 Robot controller
- 3 Robot dress pack
- 4 Robot end of arm tooling
- 5 Power and media supply
- 6 Programming service
- 7 Installation and setup service
- 8 PLC/HMI controller
- 9 Media panel

## BizLink B-Flex Cobot

Components for lightweight and collaborative robots



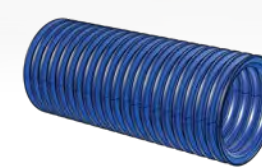
BizLink B-Flex  
round holder



Holder axis 6 with wrist  
support Ø 63 mm



Hook and loop fastener  
30 x 460 mm & 30 x 360 mm



Corrugated hose BizLink proflex  
Ø 17 mm & 23 mm blue

With BizLink B-Flex Cobot we offer a flexible and slip-resistant solution for attaching components and dresspacks to lightweight and collaborative robots.

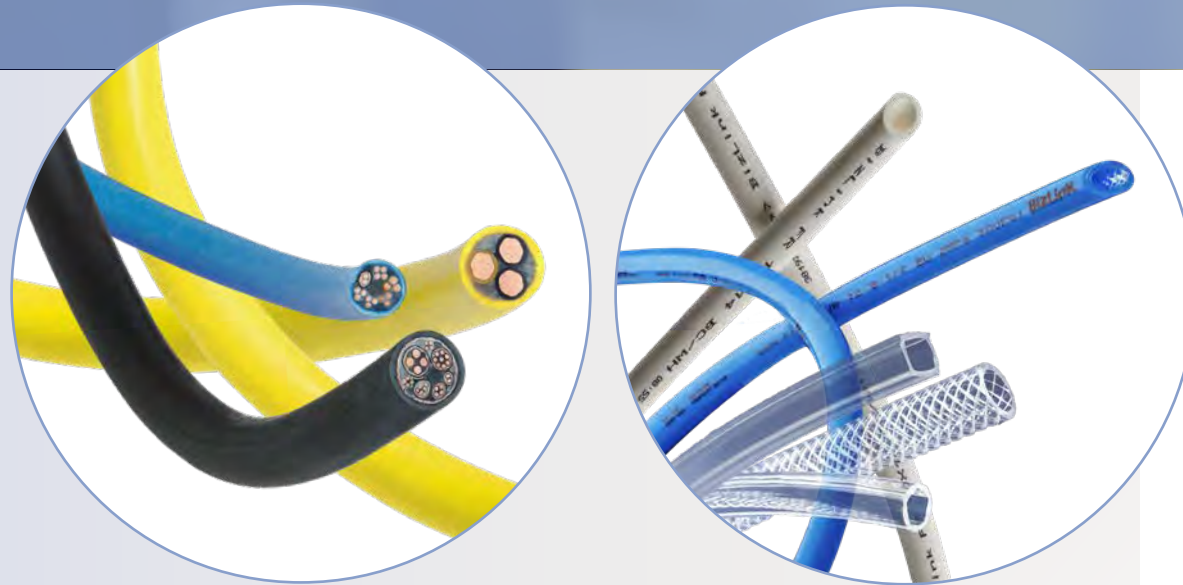
As solution provider we offer not only cables and dresspacks. We also develop and supply all guiding elements required for smooth operation. Individual support components for guiding

dresspacks, diverse installation fittings and innovative coupling and connector systems are some examples of our broad range of components.

- › **Top quality materials.**
- › **Longevity.**
- › **Simple handling.**



## Robotic cables & hoses



### Complete robotic cable solutions

Cables used for robots have to meet the highest requirements in terms of mechanical, chemical and thermal properties. They need to withstand rapid acceleration and deceleration, tensile, compressive and torsion stress as well as the millions of bending cycles. They also need to be resistant to high temperatures, welding splatters, oil and various other chemicals. We use standard and special insulation material which make our cables highly abrasion and media resistant, always keeping their high flexibility. Moreover, we offer an extensive range of cables for fixed applications. We offer you customized special cables with minimum order quantities, starting at 100 m – with short delivery times. Standard cables are often delivered ex-stock.

**Taking into account our long years of expertise in the design, production, installation and service of robotic cables we truly are cable experts – you can rely on us.**

Each single cable is tested in our plant's own test center regarding fitness for purpose and compliance to exact customer requirements. On request individual test records are made available. For our customers that signifies: secured quality.

### Our cable test methods:

- Reversed bending tests
- Flexlife tests
- Torsion tests

### Corrugated hoses & media hoses

We develop and produce all the polyurethane hoses for integration in umbilicals / dresspacks. Our polyurethane hoses are used in many industrial applications, e. g. on industrial robots. They are utilized to transmit air, water and gases, or also as tubes to convey and position solid states such as rivets, bolts etc.

## Automation & Drives

*Industrial cables with the special properties your application needs*

**When it comes to state-of-the-art automation equipment, your plant network and cabling infrastructure needs to be ready for increasingly complex bus systems that have to enable communication from the supervisory control system down to the actuator/sensor level. As more channels are added to accommodate all this data transmission, cables are getting more sophisticated too.**

BizLink's factory automation and drive specialists realize that data and communication complexity must go hand-in-hand with assurance and reliability of production and safety equipment. And at the most basic level, this means performance and reliability of the cable carrying all these electrical and optical signals.

### Automation & drives cables

- Industrial Ethernet/ PROFINET cables
- PROFIBUS cables
- DeviceNet cables
- CAN bus cables
- USB/FireWire
- Feedback cables
- Power cables

### Specialized properties

- Flame retardant
- Weld splatter resistant
- Highly flexible
- Permanent installation
- Halogen free
- Silicon free
- Sunlight resistant
- Oil resistant
- Cold resistant
- Chemical resistant
- Dragchain cable with up to 10 million bending cycles
- RoHS compliant





# advintec TCP

Calculation and calibration of robotic tools and fixtures in up to 6 dimensions



## The challenge

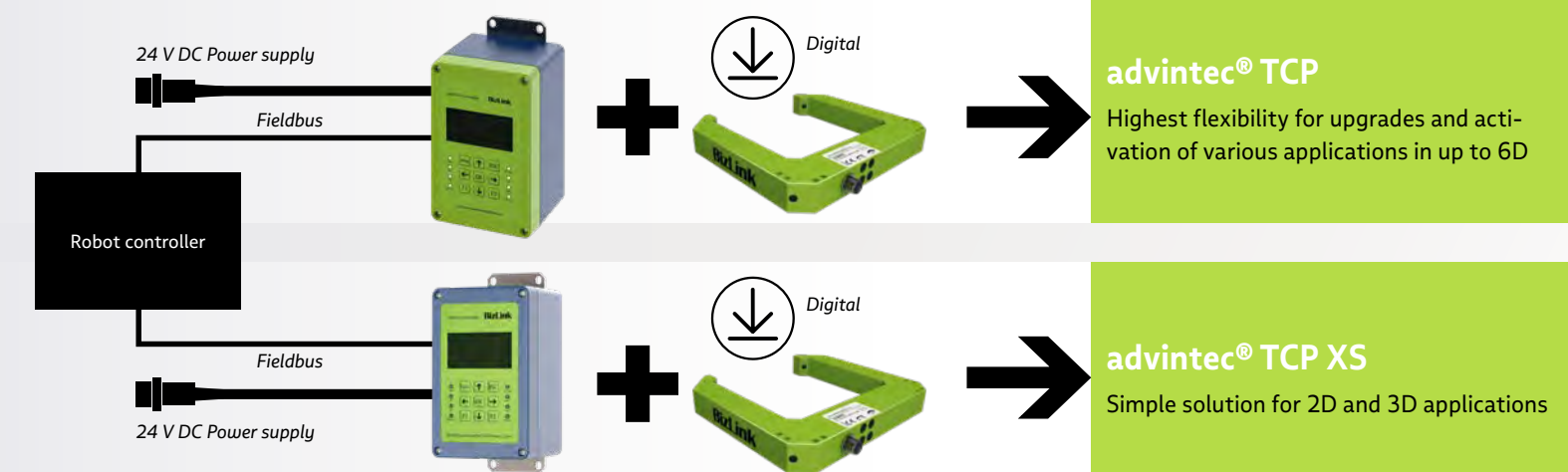
Continually securing the correct operating position for fixtures and robotic tools such as welding torches and milling tools.

## The solution

The advintec TCP tool calibration system calibrates the tool or fixture electronically in up to six dimensions. The robot program is automatically corrected by the measured variations and ensures that the tool always operates at the correct position. advintec TCP is a high-precision calibration system that can be used for all robot types and most robotic tools, making it independent of specific manufacturers.

## Your benefit

Correction takes place directly and automatically in the ongoing production process.



## Advantages at a glance

- Automatic absolute calculation of robotic tools and fixtures
- Auto-commissioning and ease of use
- Simplified Integration in the production line due to small footprint
- Robust sensor available in two sizes
- Multi-sensor-system (connection of additional sensors possible)
- Reduction of costs
  - Prevents the production of defective parts
  - Reduces scrap and rework
  - Short setup times
- Automatic correction of the trajectory due to wear and tear or tool-replacement
  - 100 % quality assurance
- Connection of the calibration system to the robot controller, i.e. the calibration procedure takes place in an evaluation unit and transfers correction values to the robot controller

- High process reliability
- No additional PC's required
- Logging of calibration data
- Data evaluation possible at all times

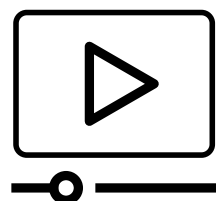
## Applications

Applicable for all rotation-symmetric tools. For special applications we offer you optional technology packages

- TCP software milling
- TCP software stud welding
- TCP software sealant nozzle (hook nozzle)
- TCP software tandem torch
- TCP software cutting tools/blades

Our products are also available for medical as well as food processing applications. For more information contact us!

Watch the video





Our customers' needs come first, which is why we only develop custom training programs, delivered at your site or at our training facility.

## Automation Systems Training

System-level training customized to meet your needs

**As a manufacturer, your most valuable resources are your employees and their ability to recover from errors and downtime. BizLink automation systems training's approach to training is designed to make sure your employees get the knowledge they need in the least amount of time to keep productivity high.**

### We train systems, not products

BizLink automation systems training takes an unbiased systems approach to give your employees the knowledge they need to be successful.

### Applications

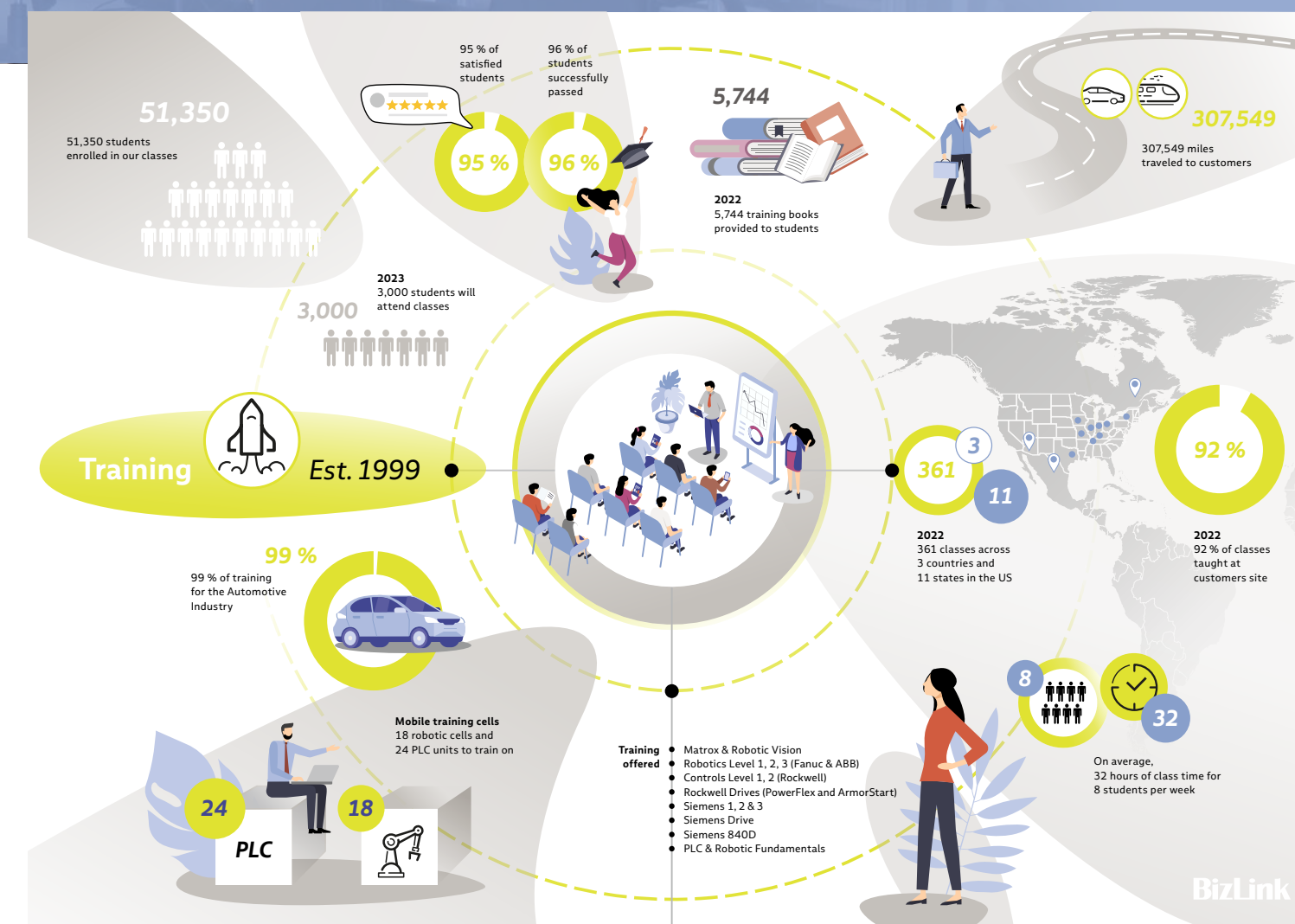
- Material handling
- Spot and arc welding
- Advanced material joining technologies (flow-drill screw, riveting, clinching)
- Dispense
- Waterjet cutting
- Laser applications
- Thermal plasma spray coating
- Drilling
- Polishing
- Grinding
- Machine vision
- Stamping and press systems

### Industries served

- Automotive
- Aerospace
- Metal and plastic processing, stamping, forging, fabrication, molding
- Municipal water systems (water and wastewater); CEC certified and accredited in Michigan and Wisconsin
- Paper processing
- Food, beverage, and packaging industry
- General and heavy manufacturing

BizLink's custom approach to automation systems training realizes that one training program does not fit the need of every student. Before we begin, BizLink instructors research your organization's needs, including:

- Student demographics (engineers, electricians, operators, maintenance technicians, skilled-trades)
- Existing and proposed automation equipment (PLCs, robots, presses, variable frequency drives (VFD), machine controls, HMIs and safety systems)
- Existing applications and processes (robotic welding, sealing material handling, press operation, material handling, etc.)
- The specific needs of your industry and application (automotive packaging, casting, forging, heavy equipment, aerospace, wastewater treatment, general manufacturing, etc.)
- Ways to measure success, including hands-on lab exercises, testing, and task verification.



### Your people › your equipment › your facility › our expertise

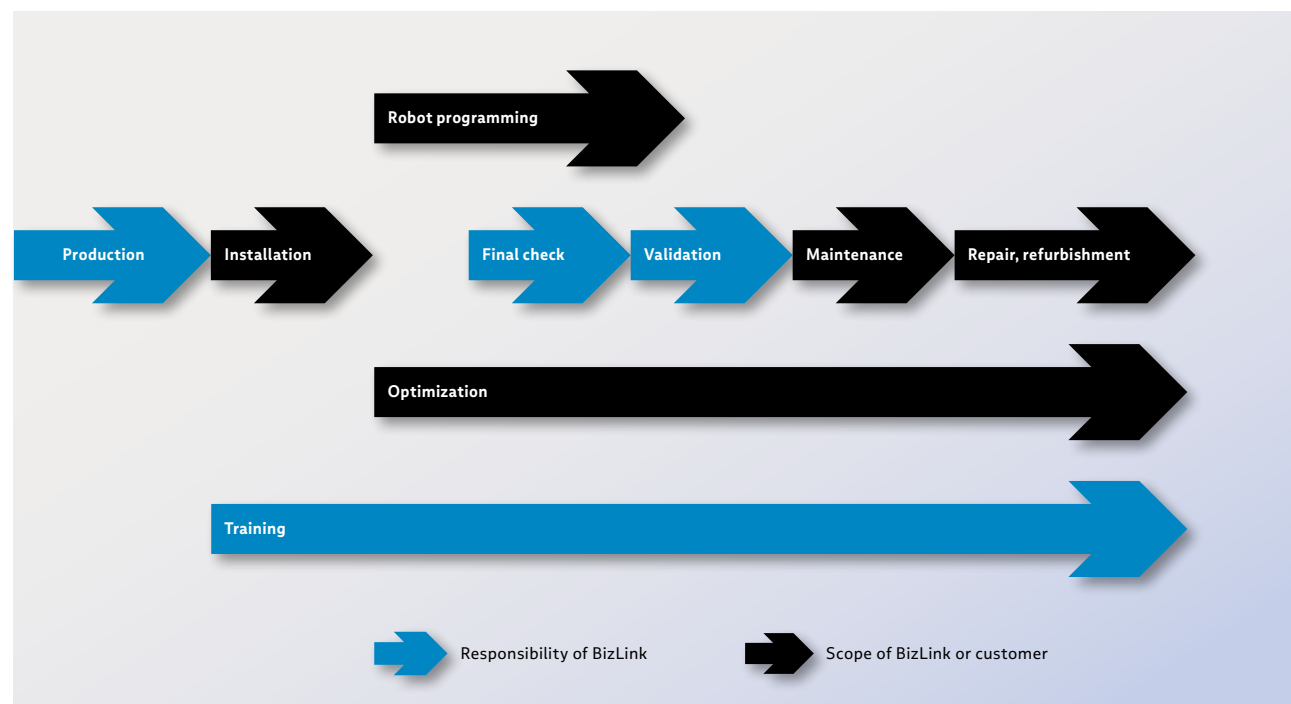
After developing the curriculum you need, BizLink works with its clients to find the right compromise between training time and uptime. To reduce the time away from the plant, BizLink can perform training at the client's location or in our professional classrooms. We will construct mobile workcells if necessary so that production can continue while new techni-

cians are trained. Whether BizLink trains your employees or just your trainers, you can be confident that your program is best-in-class thanks to BizLink's certifications as an official learning institution by the state of Michigan.



## Services for cable management systems

Reduce your downtime



Starting with cable production through the installation, optimization and final check of the dresspack systems BizLink can reduce your downtime. We also offer after sales services such as preventive maintenance, repair and refurbishment of dresspacks.



## Sales network



## BizLink Robotic Solutions Competence centers

### BizLink Robotic Solutions USA, Inc.

100 Kay Industrial Drive  
Lake Orion, Michigan 48359-1831  
USA  
T +1 248 484-5500

### BizLink Robotic Solutions Germany GmbH

Brüsseler Strasse 12      An der Auehütte 10  
30539 Hanover      98574 Schmalkalden  
Germany      Germany  
T +49 511 12 35 76-30      T +49 3683 6505-0

### BizLink Special Cables (Changzhou) Co., Ltd.

No. 21 Taihu West Road, New area  
Changzhou 213022  
China  
T +86 519 89887702

### BizLink Robotic Solutions France S.A.S.

1, Avenue Louis Pasteur / ZI de Gellainville  
28630 Gellainville  
France  
T +33 2373375-00

Interconnect Made Easy.



## Factory Automation

BizLink Robotic Solutions USA, Inc.

100 Kay Industrial Drive · Lake Orion, Michigan 48359-1831 · USA

T +1 248 484-5500



**factory-automation.bizlinktech.com**

 Follow us on LinkedIn

 Access web shop

© 2023 BizLink Group. All rights reserved.

BizLink and other trademarks are trademarks of BizLink Group or its subsidiaries. Other trademarks may be trademarks of their respective owners. Specifications are subject to change without prior notice.